

RESEARCH PROJECT PROPOSAL FORM

Project Title:

PROJECT TEAM

Supervisor

Name:

Position:

Email:

Phone:

Site/location:

Co-supervisor and/or co-investigator (if applicable) *

Name:

Position:

Email:

Phone:

Site/location:

**Add as many co-supervisors/co-investigators as required*

PROJECT OVERVIEW

Please provide a brief overview of the proposed project to inform prospective research candidates (approximately 300 words or less in total)

Research idea, background & rationale:

Aim/hypothesis:

Method (including data collection):

Analysis:

Type of study (qualitative, quantitative, mixed):

PROJECT INFORMATION

Is this a **NEW** project?

Do you think human research ethics approval will be required?

(If you are unsure, please contact the Research Office – Director of Research or Research Ethics and Governance Coordinator – using the details provided below)

Is this an **EXISTING** project?

(e.g. a longer term project where multiple staff and/or students will contribute)

Has the project received human research ethics approval or was it granted an exemption?

What stage would you say the project is at?

Start

Middle

Towards the end

Is there a **TIME FRAME** for your project?

What do you think is estimated time required to conduct the project or this component of the project? Click or tap here to enter text.

(please consider whether this would align with the lengths of student/medical placements with the LHD)

(Useful information: Interns (PGY1), other prevocational trainees (PGY2 and above) and vocational trainees can be on placement with the LHD for up to a year (~52 weeks); Medical students typically have placements that range in length from 30 weeks to a year)

Is there a particular time frame (e.g. a date or date range) you would ideally like to have the project completed by? Click or tap here to enter text.

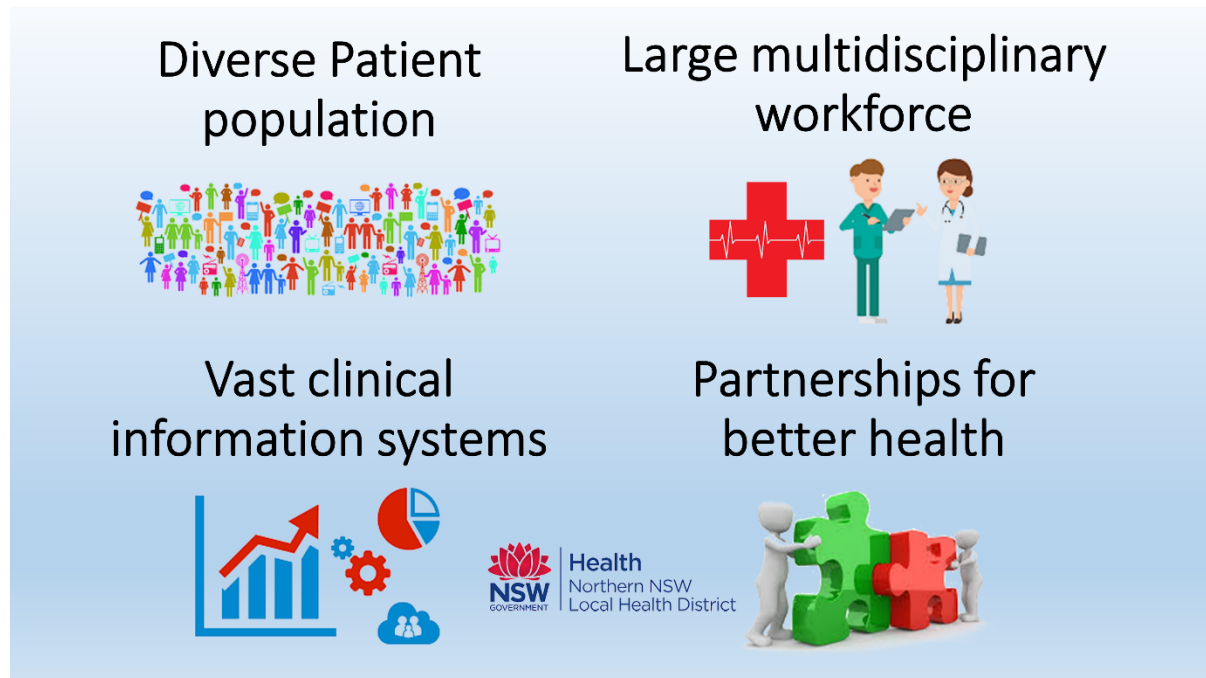
COMMENTS

Please provide any other comments you think are important for the project

**Please return completed form to Dr Alex Stephens, Director of Research, on:
Alexandre.Stephens@health.nsw.gov.au**

RESEARCH ENTRY POINTS

Northern NSW Local Health District has several key resources that are useful for research projects. These resources include access to our diverse patient population, large multidisciplinary workforce and vast clinical information systems.



These resources represent readily available entry points for research, which often satisfy the requirements for expedited or exempted ethical review. Some examples include:

Retrospective data analysis

Data, collected in our vast clinical information systems (eMR, FirstNet, SurgiNet), can be extracted and used to conduct descriptive studies, case-control studies, clinical audits (benchmarking & comparison to standards) and studies of activity. These studies, under certain conditions, often meet the requirements for exemption from ethical review (please contact the **Research Office** for more information regarding exemption).

Case studies

These studies focus on the collection of information and detailed presentation of findings about a particular patient/participant or a small group of patients/participants. Please contact the **Research Office** to access the Northern NSW LHD **template for case reports**.

Patient and staff surveys

Surveys represent a very powerful tool for gathering both qualitative and quantitative information from patients, staff and consumers (e.g. collection patient related experience and outcome measures). The findings from surveys can be used to inform practice change, quality improvement or further research. Anonymous surveys can, under certain conditions, meet the

requirements for exemption from ethical review (please contact the **Research Office** for more information regarding exemption).

Please refer to research website (<https://nswlhd.health.nsw.gov.au/research-support-resources/education-methods-2/>) for more information on study designs.

RESEARCH OFFICE CONTACTS

Rebecca Lavery

Acting Executive Officer | NCNSW HREC (NNSW and MNC LHDs)

Email: EthicsNCNSW@ncahs.health.nsw.gov.au

Acting Research Governance Officer | NNSW LHD

Email: NNSWLHDResearchGovernance@ncahs.health.nsw.gov.au

Telephone: 02 6672 0269

Dr Alex Stephens

Director of Research | Northern NSW LHD

Email: Alexandre.Stephens@health.nsw.gov.au

Mobile: 0417 282 725